

PRODUCT DATA SHEET

HBMS65 Heat Shrinkable Wrap-around

2-layer Girth Weld Field Joint Coatings

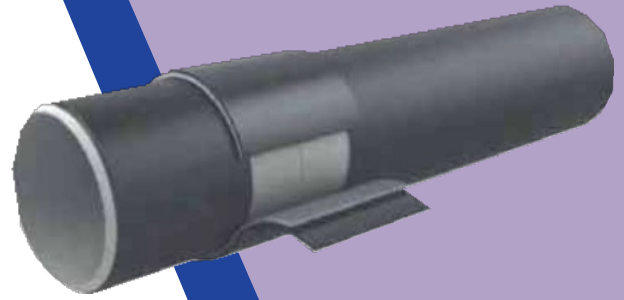
Description

HBMS65 Heat shrinkable wrap-around sleeve is designed for corrosion protection of girth weld joint buried steel pipeline, especially for 3LPE/DFBE/FBE/CTE/HDPE factory coating pipeline.

Construction : Two-Layer system

First layer : Low-preheat Adhesive (Mastic sealant / Hotmelt)

Second layer: Radiation cross-linked, high density polyethylene backing, backing with SIP (Shrink Indicator Pattern)



Features & Benefits

- Saves time and cost by lower pre-heat temperature.
- Excellent performance for aging and provide best shelf life.
- Excellent multi-functional adhesive allow for lower installation pre-heat temperature and super bonding to PE/DFBE/FBE/CTE/HDPE offer fully resistant to shear forces induced by soil and thermal movements
- Superior cathodic disbondment and hot water immersion resistance offers the optimum barrier long term protection against corrosion
- Embossed backing provides a Shrink Indicator Pattern for application of heat, ensures correct application heating

Selection Criteria

HBMS65	
Standard Reference	EN 12068 Class C 50 UV, ISO 21809-3 14 A 2, AWWA C216
Compatible line coatings	PE/FBE/DFBE/CTE/AE
Soil stress restriction	Moderate
Max. operating temperature	65°C
Pre-heat temperature	50°C
Recommended pipe preparation	St 2~3

Ordering Information

HBMS65 type products are available:

- ▶ As cut piece (pre-cut sleeve with separate closure patch)
- ▶ As a roll (closure patches to be ordered separately)

Select sleeve width that will overlap onto the mill-applied coating by 2 inches (50 mm) minimum on each side of the weld joint

Sleeve width (mm): 16", 18", 20", 24"

Other width (10"-36") are available as per Customer special requirement.

Product thickness (mm)		
Backing (as supplied)	Adhesive (as supplied)	Total thickness (applied)
0.8 ~ 1.1	1.0 ~1.8	1.8 ~3.0

Other sleeve thickness from 1.4 to 3.2mm are available as per requirement.

Standard Ordering Options

Cut piece (Pre-Cut sleeve with separate closure patch)		Roll form (closure patches to be ordered separately)	
Example:	HBMS65-12 X18/2.2	Example:	HBMS65-18 X100/2.2-RL
65	Operating Temperature 65°C	65	Operating Temperature 65°C
12	Outside pipe diameter in inch	18	Roll width in inch
18	Sleeve width in inch	100	Roll length in feet
2.2	Sleeve thickness in mm	2.2	Roll thickness in mm
		-RL	Supplied in rolls

Sleeve cut lengths and appropriate closure patch widths depend on the pipe size and product construction, refer installation Manual.

